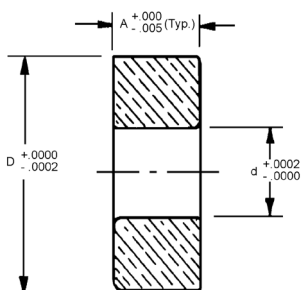


OIL-LESS BEARINGS

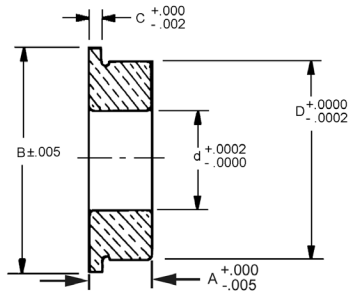
| BORE SIZE | TYPE | MATERIAL |
|---------------|--------------------------|---|
| 3/64" TO 1/2" | PLAIN ULTRA PRECISION | SINTERED BRONZE MIL-B-5687A TYPE 1 VACUUM IMPREGNATED MIL-L-6085 |



| STOCK NO. | SHAFT SIZE | d | D | A |
|-----------|------------|-------|--------|------|
| B3-1 | 3/64 | .0469 | .1563 | .093 |
| B3-2 | 1.4 MM | .0550 | .1876 | .109 |
| B3-3 | 1/16 | .0627 | .2501 | .093 |
| B3-17 | 5/64 | .0781 | .2500 | .094 |
| B3-4 | 5/64 | .0783 | .2501 | .093 |
| B3-18 | 3/32 | .0937 | .3125 | .109 |
| B3-5 | 3/32 | .0939 | .3126 | .109 |
| B3-19 | 1/8 | .1250 | .2500 | .094 |
| B3-20 | 1/8 | .1250 | .3125 | .109 |
| B3-13 | 1/8 | .1250 | .3750 | .156 |
| B3-6 | 1/8 | .1252 | .3751 | .140 |
| B3-7 | 5/32 | .1564 | .3126 | .125 |
| B3-14 | 3/16 | .1875 | .5000 | .156 |
| B3-15 | 3/16 | .1875 | .5000 | .196 |
| B3-21 | 3/16 | .1875 | .3750 | .125 |
| B3-8 | 3/16 | .1877 | .5001 | .156 |
| B3-16 | 1/4 | .2500 | .6250 | .196 |
| B3-22 | 1/4 | .2500 | .5000 | .188 |
| B3-9 | 1/4 | .2502 | .6251 | .196 |
| B3-10 | 5/16 | .3127 | .6876 | .250 |
| B3-11 | 3/8 | .3752 | .8751 | .281 |
| B3-12 | 1/2 | .5002 | 1.1251 | .312 |



| BORE SIZE | TYPE | MATERIAL |
|---------------|----------------------------|---|
| 3/64" TO 1/2" | FLANGED ULTRA PRECISION | SINTERED BRONZE MIL-B-5687A TYPE 1 VACUUM IMPREGNATED MIL-L-6085 |



| STOCK NO. | SHAFT SIZE | d | D | A | B | C |
|-----------|------------|-------|--------|------|-------|------|
| B4-1 | 3/64 | .0469 | .1563 | .093 | .203 | .031 |
| B4-2 | 1.4 MM | .0550 | .1876 | .109 | .234 | .031 |
| B4-3 | 1/16 | .0627 | .2501 | .093 | .296 | .031 |
| B4-16 | 5/64 | .0781 | .2500 | .094 | .296 | .023 |
| B4-4 | 5/64 | .0783 | .2501 | .093 | .296 | .031 |
| B4-17 | 3/32 | .0937 | .3125 | .109 | .359 | .023 |
| B4-5 | 3/32 | .0939 | .3126 | .109 | .359 | .031 |
| B4-18 | 1/8 | .1250 | .2500 | .094 | .296 | .023 |
| B4-19 | 1/8 | .1250 | .3125 | .109 | .359 | .023 |
| B4-13 | 1/8 | .1250 | .3750 | .156 | .440 | .030 |
| B4-6 | 1/8 | .1252 | .3751 | .140 | .422 | .031 |
| B4-7 | 5/32 | .1564 | .3126 | .125 | .359 | .036 |
| B4-14 | 3/16 | .1875 | .5000 | .196 | .565 | .042 |
| B4-21 | 3/16 | .1875 | .3750 | .125 | .422 | .031 |
| B4-8 | 3/16 | .1877 | .5001 | .156 | .565 | .042 |
| B4-15 | 1/4 | .2500 | .6250 | .196 | .690 | .042 |
| B4-22 | 1/4 | .2500 | .5000 | .188 | .547 | .045 |
| B4-9 | 1/4 | .2502 | .6251 | .196 | .690 | .042 |
| B4-10 | 5/16 | .3127 | .6876 | .250 | .750 | .042 |
| B4-11 | 3/8 | .3752 | .8751 | .281 | .969 | .062 |
| B4-12 | 1/2 | .5002 | 1.1251 | .312 | 1.250 | .062 |